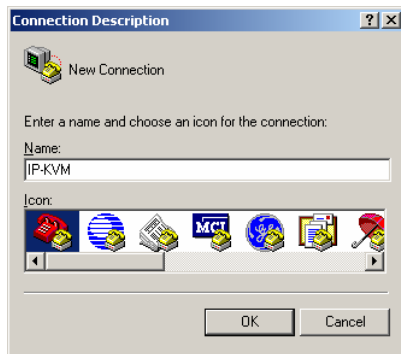
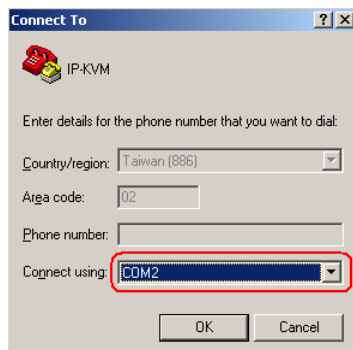


How to reset Defaults (via Serial Port)

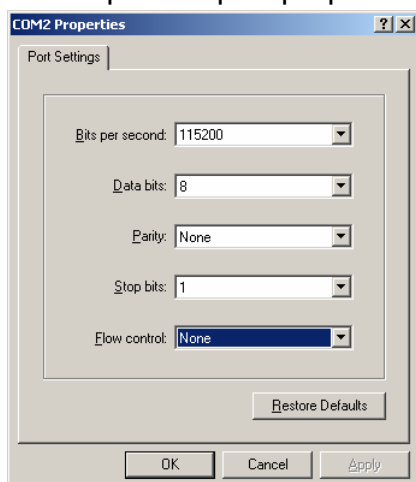
- (1) Connect power to IP-KVM
- (2) Connect Computer via **Null modem cable**
- (3) Using Hyper Terminal to setup IP-KVM
 - a. Start -> Program -> Accessories -> Communication -> Hyper Terminal -> input Name of connection



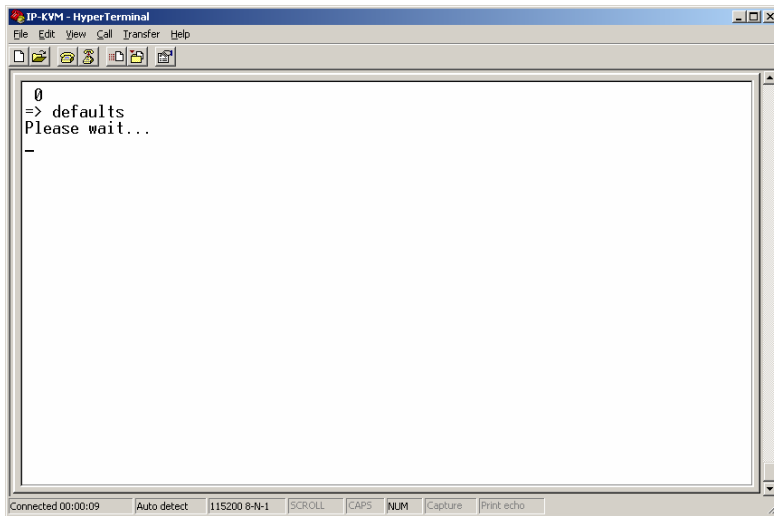
- b. Choose com port which you connect IP-KVM



- c. Setup COM port properties as below -> OK to connect IP-KVM via serial port

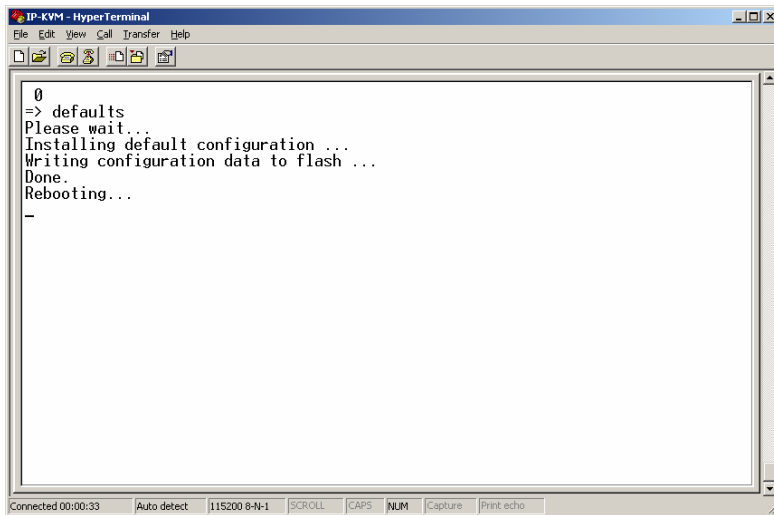


d. reset IP-KVM and immediately press the <ESC>. A prompt “=>” will show on screen. Enter “defaults” and press <Enter> key to process defaults.



```
IP-KVM - HyperTerminal
File Edit View Call Transfer Help
[Icons]
0
=> defaults
Please wait...
-
```

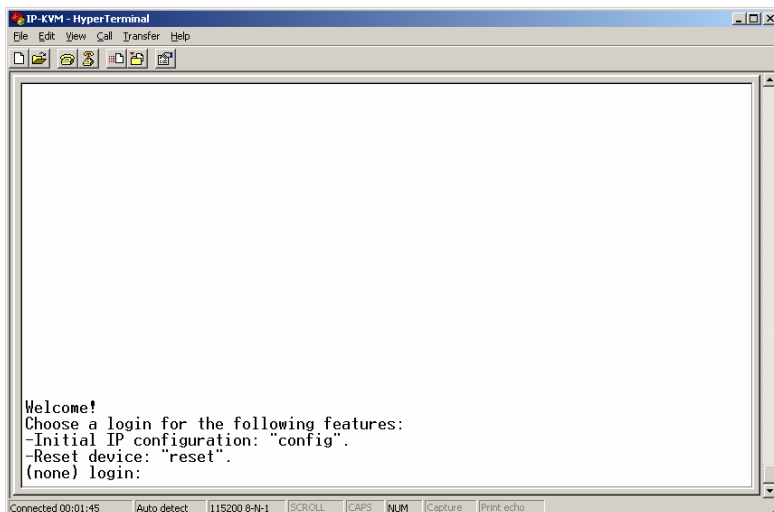
Connected 00:00:09 | Auto detect | 115200 8-N-1 | SCROLL | CAPS | NUM | Capture | Print echo



```
IP-KVM - HyperTerminal
File Edit View Call Transfer Help
[Icons]
0
=> defaults
Please wait...
Installing default configuration ...
Writing configuration data to flash ...
Done.
Rebooting...
-
```

Connected 00:00:33 | Auto detect | 115200 8-N-1 | SCROLL | CAPS | NUM | Capture | Print echo

e. Wait a few seconds, the following message will appear on the screen. Defaults was finished.



```
IP-KVM - HyperTerminal
File Edit View Call Transfer Help
[Icons]

Welcome!
Choose a login for the following features:
-Initial IP configuration: "config".
-Reset device: "reset".
(none) login:
```

Connected 00:01:45 | Auto detect | 115200 8-N-1 | SCROLL | CAPS | NUM | Capture | Print echo