



## Desktop 4/8 Bay Multilane to SAS/SATA JBOD Enclosure

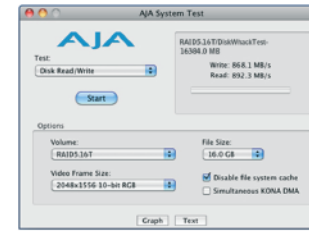
- ▶ Aluminum housing and anodized surface benefit cooling and durability
- ▶ Backplane design compatible for SAS/SATA II/III hard disk drives
- ▶ Built-in fans for self-contained ventilation
- ▶ Individual key lock on each HDD tray for physical security
- ▶ LED indicators for power and activity on each hard disk drive tray
- ▶ Temperature, fan failure LEDs and mutable buzzer alarm

### Overview

Netstor's NS750S/NS760S series provides video editing and digital content creation professionals high-speed, high-bandwidth performance for video editing/post production demanding applications at moderate cost. The compact and stylish NS750S/NS760S features multilane connectivity to a high performance RAID controller card supporting a wide range of RAID levels. When connecting to eight SAS/SATA hard disk drives, it used to need eight data cables, but now through NS750S/NS760S series' multilane (SFF-8470) connectors, it requires only one cable to connect to four drives on NS750S or two cables to connect to eight drives on NS760S, so the cable count is much reduced.

### Multilane High-Bandwidth Technology

One NS760S enclosure with eight hot-swappable high capacity SATA or high reliable SAS hard disk drives supports real-time playback 10-bit uncompressed 1080i high-definition video, two simultaneous streams of uncompressed 10-bit HD, and one stream of a single 2K RGB sequence. NS750S/NS760S is built with the latest I/O technology, the multilane connectivity delivering over 850 MB/s superior performance, for eight multiple hard disk drives configuration and advanced performance. The highly reliable, high speed multilane SFF-8470 connector combines four/eight high capacity SATA or high reliable SAS hard disk drives for high quality video or applications as well as solutions for 1080i high-definition (HD) video editing or digital content creation. NS750S/NS760S is simply the most cost-effective desktop RAID storage solution designed specifically for high-end post-production applications.



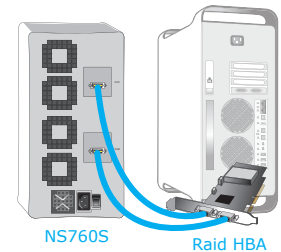
Testing conducted using AJA System Test  
 Video frame size: 2048 × 1556 10-bit RGB (2K)  
 File size: 16.0 GB  
 RAID level: RAID 5  
 Mac Pro  
 8 × 2 TB enterprise class hard disk drives  
 Areca ARC-1880x RAID card

### Enclosure Management

Each hot-swappable tray on NS750S/NS760S series provides power and activity LED indicators for each hard disk drive, and the enclosure is with built-in ultra-quiet cooling; furthermore, environmental detection features easy-to-understand LEDs and mutable buzzer alarm for fan failure and over-temperature. The thumb screw type multilane SFF-8470 connector on NS750S/NS760S prevents the cable and its connector from falling off easily, and provides more secured cable connection, improved durability, and increased electromagnetic interference protection.

### Easy Configuration for RAID Function

Through connection with RAID host bus adapter (HBA), the NS750S/NS760S JBOD enclosure can be configured easily with RAID for reliable data protection and running high-speed, high-bandwidth data for video editing and digital content creation. The JBOD enclosure is compatible with any standard PCI-X or PCI Express RAID HBA with two external mini-SAS (SFF-8088) or multilane (SFF-8470) connectors.



### Specifications

| Model                     | NS750S   | NS760S   |
|---------------------------|--|--|
| Form Factor               | Desktop 4 bay  | Desktop 8 bay  |
| Host Interface            | Single multilane (SFF-8470)  | Dual multilane (SFF-8470)  |
| HDD Interface             | SAS/SATA (3/6 Gbps)  |  |
| No. of Disk(s)            | Up to 4  | Up to 8  |
| RAID Function             | JBOD   |  |
| LED Display for Each Tray | White - power-on indicator<br>Blue - busy (HDD access) indicator   |  |
| LED Display for Enclosure | Power-on LED - white<br>Fan normal - green; fan failure - red<br>Temp. normal - green; temp. over 55°C - red |  |
| Material                  | Aluminum housing and plastic front panel   |  |
| Power Supply              | 220 W (high reliability IPC-grade)<br>100-240 V AC, 50/60 Hz universal                                       | 300 W (high reliability IPC-grade)<br>100-240 V AC, 50/60 Hz universal |
| Cooling                   | Two 60×60×15 mm hot-swappable cooling fans   | Four 60×60×15 mm hot-swappable cooling fans                            |
| Alarm                     | Buzzer beeping for fan failure or over temperature (over 55°C) occurs  |  |
| Dimension                 | 231(D)×156(W)×209(H) mm<br>9.1(D)×6.1(W)×8.2(H) inch   | 231(D)×156(W)×310(H) mm<br>9.1(D)×6.1(W)×12.2(H) inch                  |
| System Requirement        | An external mini-SAS or multilane port   | Two external mini-SAS or multilane ports                               |
| O.S. Support              | O.S. independent   |  |

